

婦女及兒童庇護中心

Shelter for
Women and
Children



通訊地址

九龍尖沙咀郵政信箱99068號

Mailing address

P.O. Box No. 99068, Tsimshatsui Post Office, Kowloon, Hong Kong.

電郵 E-mail: hhshelter@harmonyhousehk.org

網址 Website: www.harmonyhousehk.org

機構簡介

和諧之家是專門處理家庭暴力的非牟利社會服務機構，我們一直致力為家暴受害人提供適切的輔導及治療服務，推廣和諧及健康的家庭關係。由1985年成立全港首間為受虐婦女及其子女提供服務的庇護中心開始，機構至今已發展成為一站式的家暴防治中心，服務包括預防性社區教育工作、受虐及施虐者輔導、兒童目睹家庭暴力輔導及親職技巧訓練。此外，機構亦為跨專業人士提供培訓，並倡議政策及法律的改革。

信念及使命

- 我們相信每個人的權利及尊嚴均應受到尊重，並享有不受暴力、虐待及壓迫的權利，這項人權不論在社會或家庭裡，均應受到保護
- 我們相信平等和互相尊重，是建立和諧家庭關係及培育家庭成員身心健康發展的基石
- 我們強烈反對使用暴力操控家庭成員，並協助家庭暴力受害人重拾應有的生活尊嚴
- 我們致力建立一個「家暴零容忍」的社會



婦女及兒童庇護中心

目標

- 為受虐婦女及其子女提供安全和緊急的庇護服務
- 為正受家庭暴力困擾之家庭及親密伴侶提供24小時即時支援及轉介服務
- 協助受虐婦女重建尊嚴及建立和諧生活
- 協助目睹或遭受家庭暴力的兒童消除家暴困擾

服務對象

- 受虐婦女及其子女（任何年齡之女童及12歲以下之男童；如有需要，庇護中心會酌情考慮讓12至14歲之男童入住）
- 香港居民或合法留港人士
* 服務對象涵蓋少數族裔，以及不同性取向、宗教或其他背景的人士

申請入住方法

- 自行致電24小時婦女求助熱線25220434
- 由社工、警察、醫護人員或其他人士作出轉介

終止服務方法

- 庇護中心或入住婦女均可要求終止庇護中心服務



服務內容

一. 庇護服務

免費緊急住宿服務

- 入住宿友需自行負責日常生活及膳食開支
- 庇護中心可為有經濟困難的宿友提供基本生活用品

住宿期

- 一般住宿期為兩星期
- 如有需要可申請延長至三個月

入住準則

- 婦女須有自我照顧以及照顧子女之能力
- 入住宿友能遵守庇護中心地址、地區及有關路標的保密原則
- 入住宿友能遵守庇護中心規則及適應群體生活
* 庇護中心會作評估及審核申請入住的個案

二. 熱線輔導及跟進服務

24小時婦女求助熱線

為面對家庭暴力的婦女提供危機評估及情緒支援，並可安排入住庇護中心，協助她們制定安全計劃，並介紹及轉介有需要的服務。

婦女熱線跟進服務

為曾致電熱線求助，但暫時不住入庇護中心的受虐婦女提供情緒支援及輔導。



三. 個人及小組輔導

為協助入住婦女及兒童處理家庭暴力所帶來的影響，庇護中心社工會提供危機評估、緊急需要評估、個案輔導及治療小組等活動，讓婦女及兒童學習有關情緒處理、認識家暴、制定安全及未來生活計劃、婚姻、親密關係及親子關係等課題。

四. 教育及發展性活動

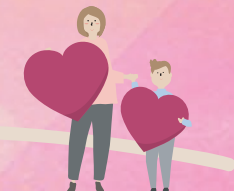
庇護中心推行多元化教育及發展性活動，包括法律講座、婦女分享、親子遊戲、功課輔導、生日會、節日慶祝活動、宿友週會及專題講座等，幫助入住宿友建立良好社區資源網絡，提升適應新生活的能力。

五. 離舍跟進服務

我們透過三個月內電話聯絡或家訪形式，為離舍婦女提供輔導、情緒支援及社區資源轉介等服務，從而提升她們的生活技能和保護自己及子女身心安全的意識。

六. 對外合作及外展服務

我們透過講座、工作坊及熱線跟進等服務，接觸未有求助或未能入住庇護中心的受虐婦女、兒童及青少年，當中包括低收入的高危家庭、少數族裔及新來港人士。



Harmony House was established in 1985 as the first shelter for abused women and their children in Hong Kong. Today, we have developed into a one-stop anti-domestic violence service agency, with a wide range of preventive, therapeutic and developmental programs to help families affected by domestic violence. We also organize community education programs, promote harmonious and healthy family relationships, provide training to multidisciplinary professionals and advocate for policies and legislations on behalf of victims of violence, their families and communities.

Belief & Mission

- We believe that all human beings have the right to live with dignity and respect, and to be free from violence, abuse and coercion. Human rights should be preserved in our homes as well as in our society.
- We believe equality and mutual respect are fundamental principles for a healthy and harmonious family.
- We are dedicated to eliminating domestic violence, opposing the use of violence as the means of control, and helping victims of domestic violence resume dignity.
- We hope to build up a society of "Zero Tolerance to Domestic Violence".

Shelter for Women and Children

Objectives

- To provide a safe and immediate refuge for female victims of domestic violence and their children
- To offer 24-hour immediate support and referrals for families and intimate partners affected by domestic violence
- To empower abused women, and help them restore their dignity and establish harmonious relationship
- To protect and address the needs of children who have witnessed or been affected by domestic violence

Service Targets

- Abused women and their children (girls of all ages and boys who are under 12; discretion may be granted to boys who are 12 to 14 years old for admission)
- Hong Kong residents or those who have the legal right to stay in Hong Kong
 - * We serve all ethnic groups and people of different sexual orientations, religions, or other backgrounds.

Application for Admission

- Self-approach through our 24-hour Woman Hotline 25220434
- Referral by social workers or other professionals

Termination of Service

- Either the Shelter or women residents may initiate the termination of service

Scope of Service

1. Refuge Service

Free Emergency Accommodation

- Residents are responsible for the expenses of their daily living
- The Shelter may offer basic necessities to residents with financial difficulties

Duration of Stay

- The period of stay is usually two weeks
- Under special circumstances, extension to a maximum of three months may be granted

Admission Criteria

- Women have to be able to take care of themselves as well as their children
- Admitted residents have to keep confidential of the shelter address, location and appearance
- Admitted residents have to abide by Shelter rules and adapt to group living

* Individual assessment for approval of admission will be conducted by the Shelter.

2. Woman Hotline & Follow-up Service

24-hour Woman Hotline

We provide female victims of domestic violence with assessment, crisis intervention, emotional support, information on community resources, knowledge on safety and protection, and referrals. If necessary, admission to the Shelter can be arranged.

Hotline Follow-up Service

To provide emotional support and counseling for the callers who are affected by domestic violence.

3. Individual and Group Counseling

Crisis assessment, urgent need assessment, casework counseling and therapeutic groups are provided to help abused women and their children to address their traumatic experience. Issues related to emotional management, impact of domestic violence, safety plans, future plans, marital discord, intimate partner and parent-child relationships are addressed.

4. Educational and Developmental Activities

Through a wide range of educational and developmental activities, residents are able to gradually build up their self esteem and establish their social support network. Regular activities include talks on legal proceedings, peer sharing groups, parent-child activities, tutorials for children, birthday parties, festival celebrations, weekly house meetings and educational talks.

5. Aftercare Service

Three-month aftercare services are provided for discharged women and children in order to facilitate them to link up with community resources and adjust to a new life. Services include telephone follow-up, face-to-face counseling, home visits, emotional support and referral services.

6. Collaboration and Outreaching Service

In collaboration with other multi-disciplinary professionals, educational talks, workshops and hotline follow-up services are rendered to reach out to the abused women, children and youth. Low-income and at-risk families, ethnic minorities and new arrivals are our major target groups.

